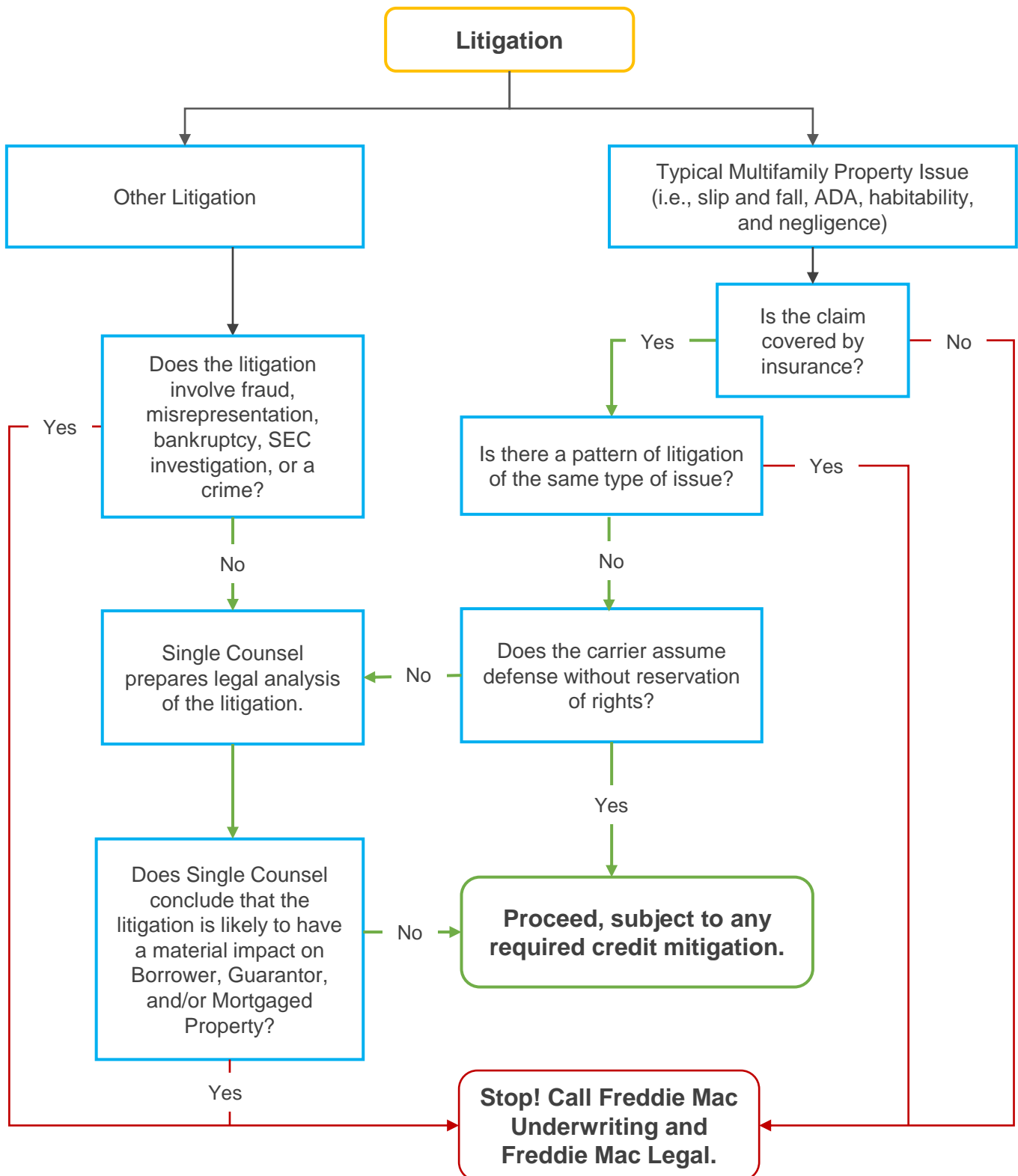


SBL Litigation Analysis Guidance



SBL Litigation Analysis Guidance

An analysis of litigation must include the following:

- The amount of the claim/amount in controversy
- A discussion of availability of insurance coverage (including limits) and whether the carrier has assumed defense
- A description of the “worst-case” scenario of the matter
- Single Counsel's determination as to whether the litigation is likely to have a material impact on borrower, guarantor, and/or mortgaged property

The analysis and all supporting documentation (including any assumption of defense letter) must be uploaded to the Document Management System (DMS) as a Preliminary Legal Issues Memorandum (PLIM).